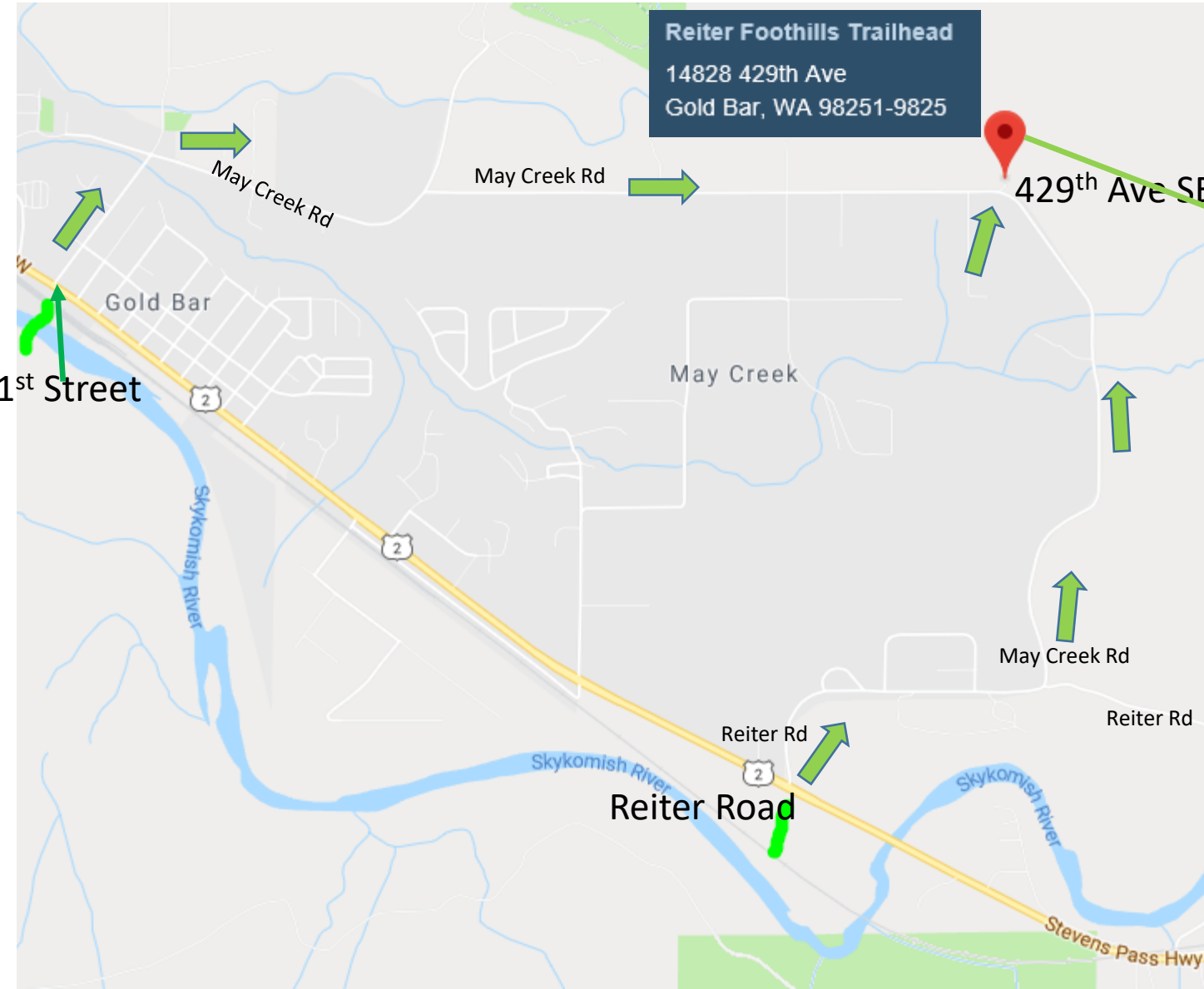
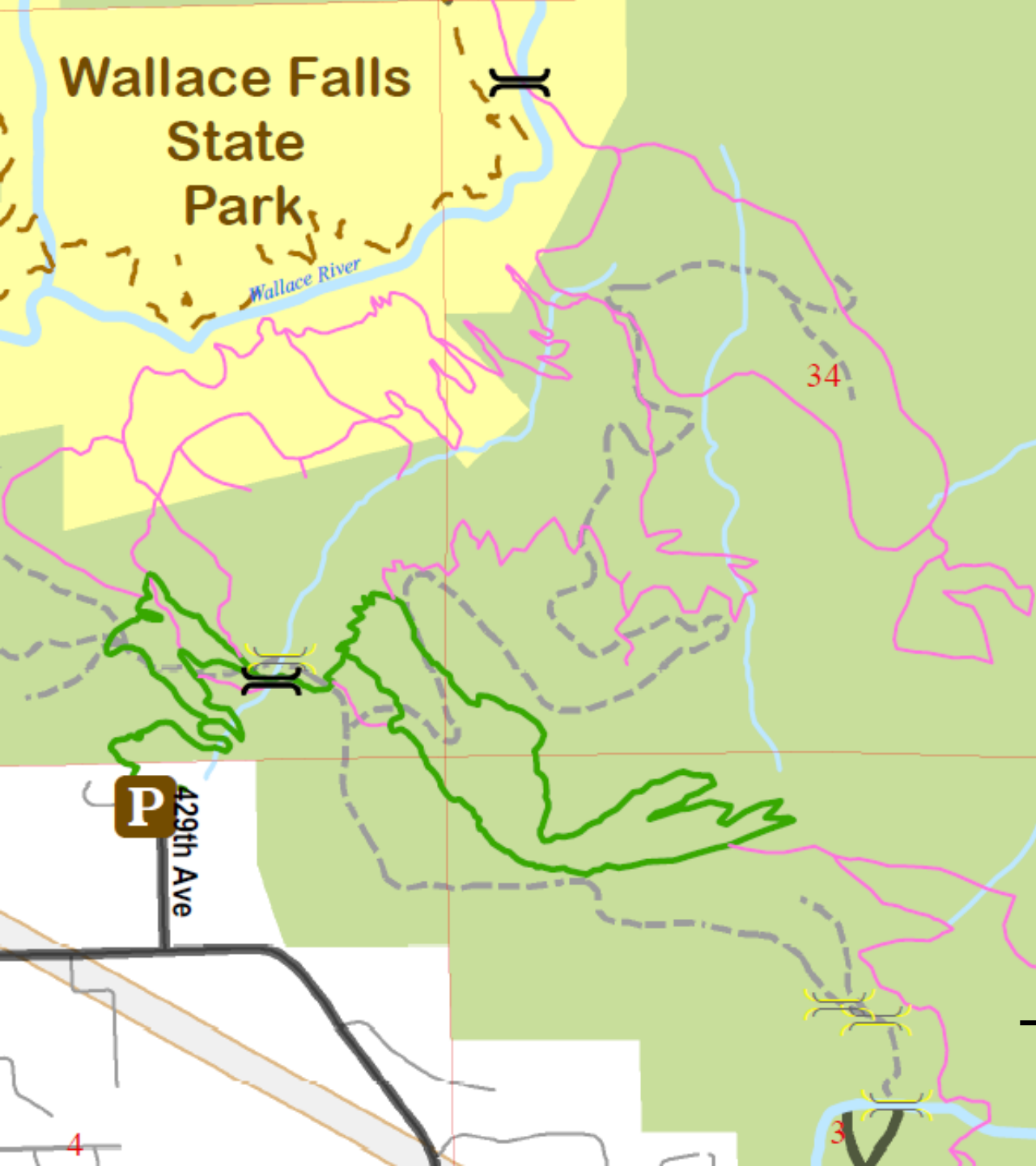


Driving Directions to Reiter Foothills Parking area
Snohomish County Parks Trailhead, no parking pass required

Reiter Foothills Trailhead
14828 429th Ave
Gold Bar, WA 98251-9825



The Trailhead is at the end of 429th Ave SE on the left. I suggest driving counter clock wise around the loop. Go left off the road, through the hay field and park facing the gravel. It will be easier to exit and less likely to get blocked in. The trail starts on the gravel path by the kiosk.



May Creek Falls



Wallace Falls State Park

Wallace River

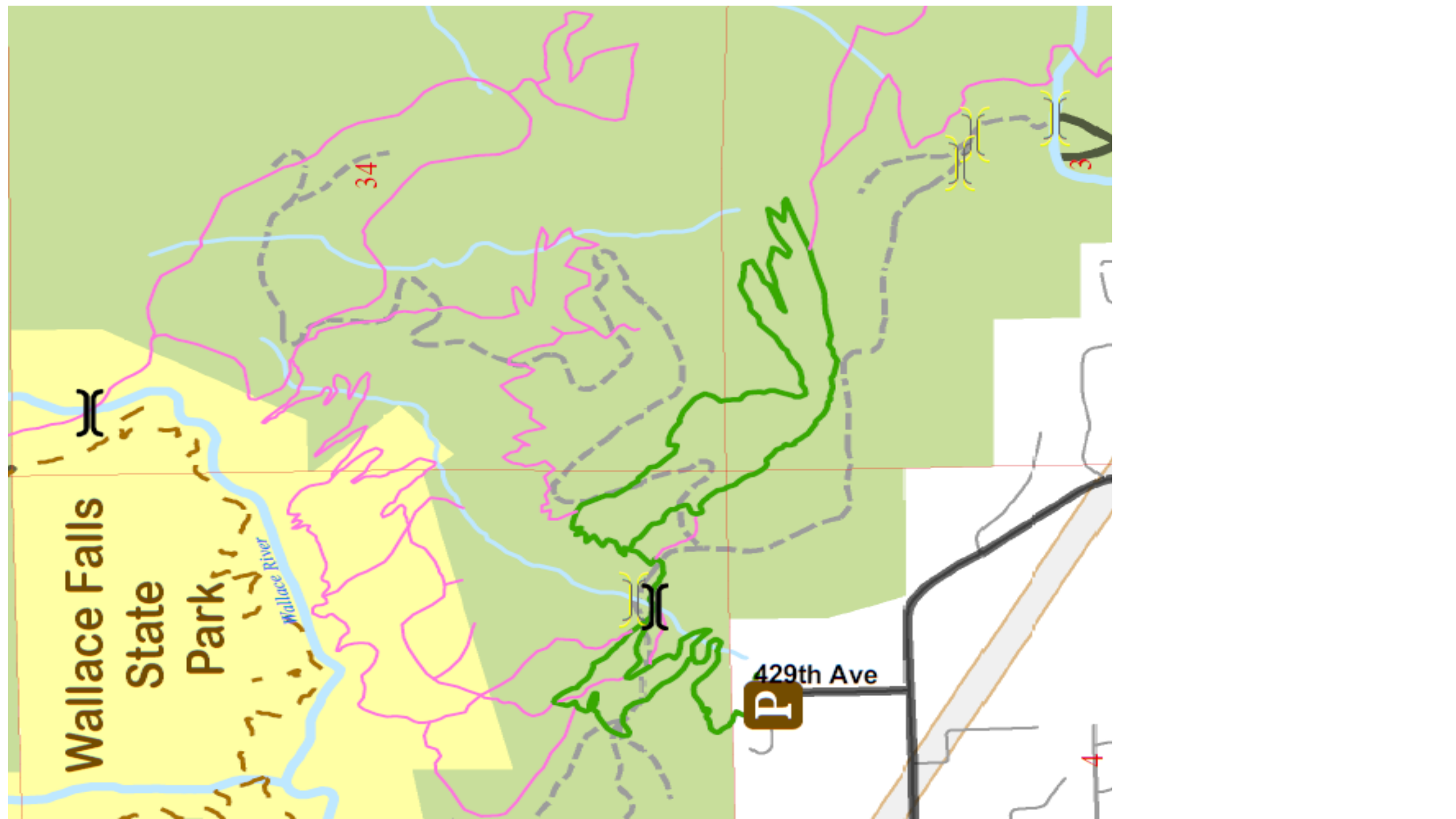
429th Ave

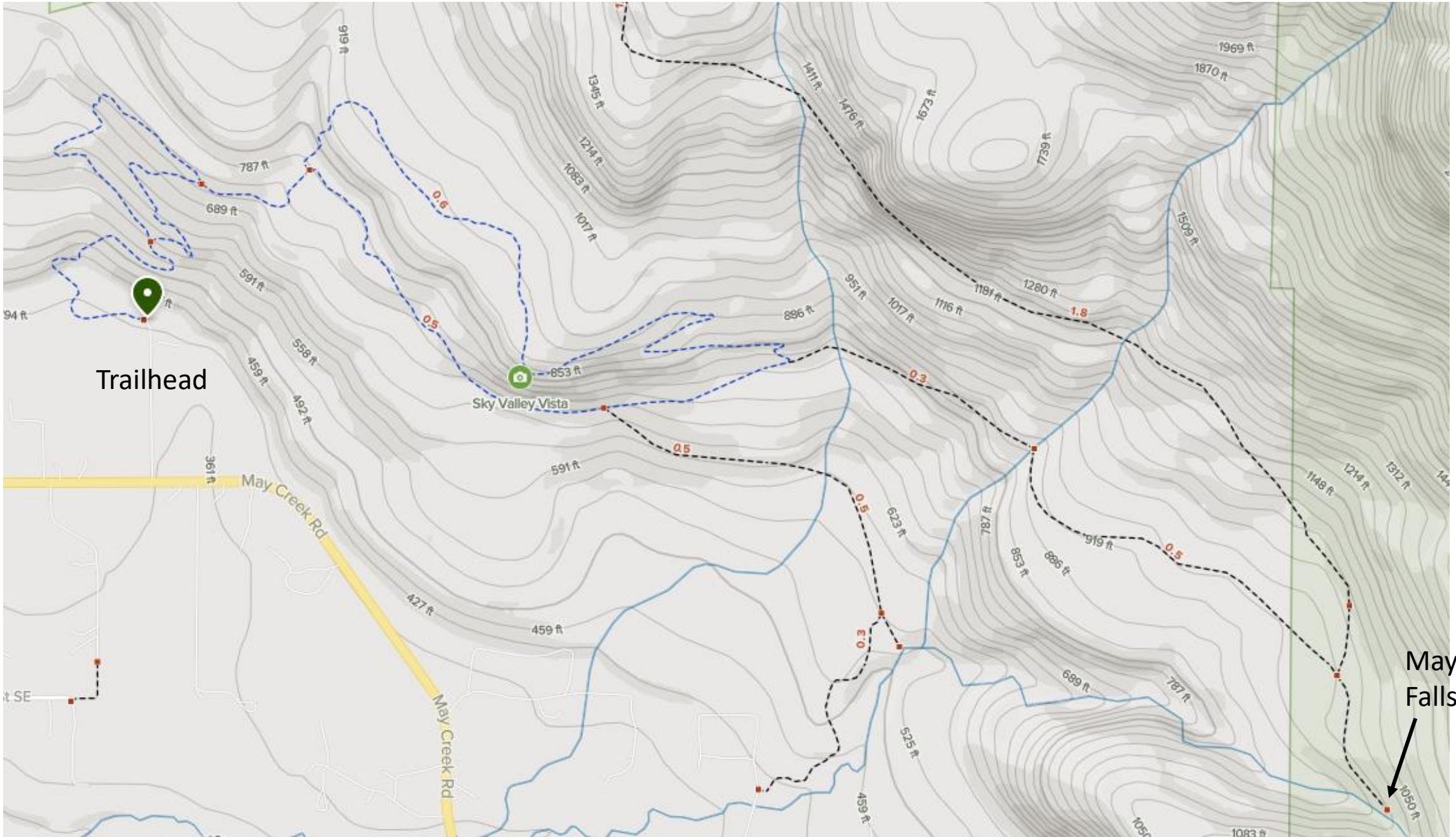


34

3

4





Trailhead

Sky Valley Vista

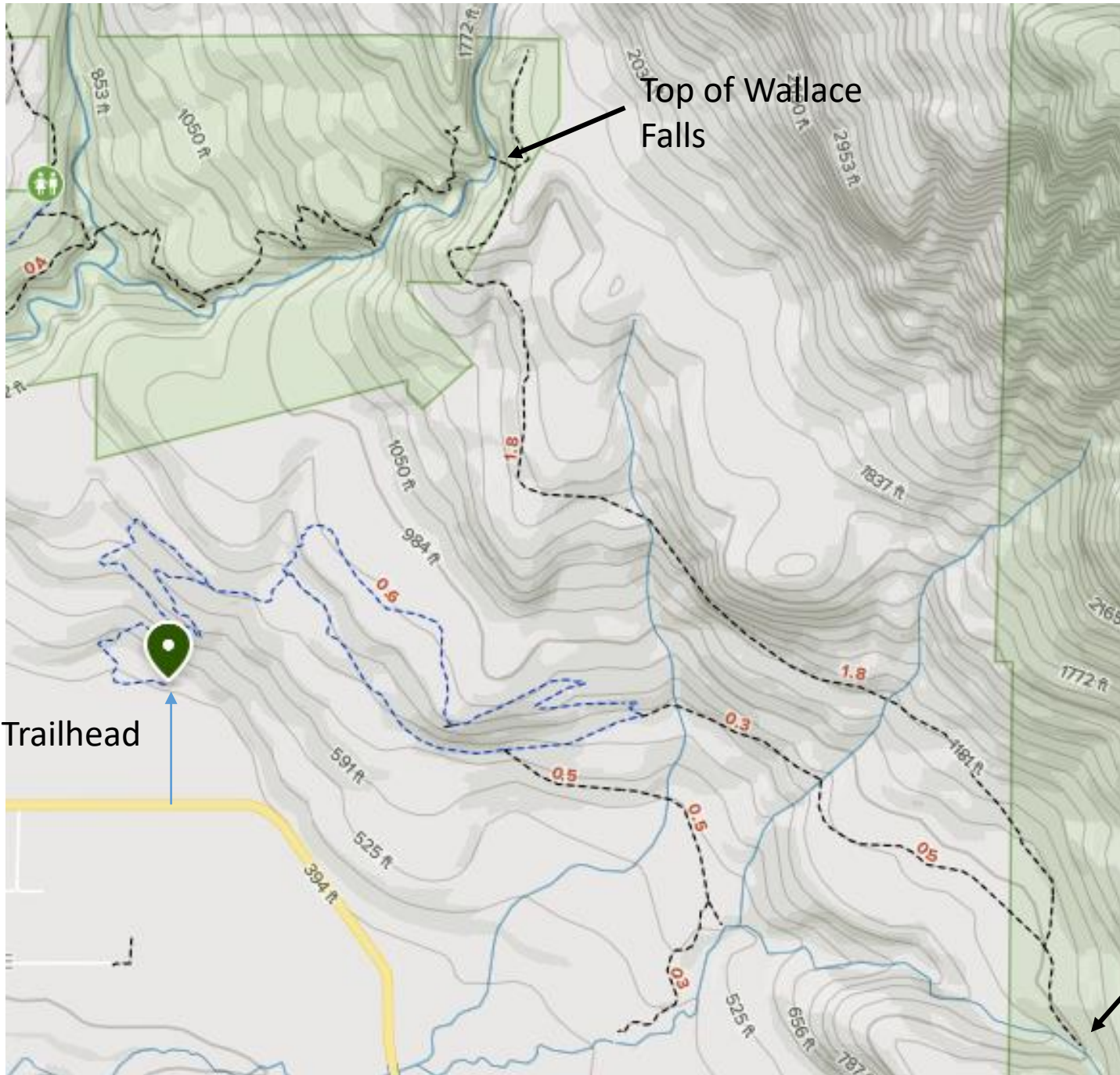
May Creek Rd

May Creek Rd

May Creek Falls

Reiter Foothills Trailhead
14828 429th Ave
Gold Bar, WA 98251-9825

Trailhead



May Creek Falls