



PONDEROSA

Back Country Horsemen of Washington
"Educate, Advocate, and Move Dirt!"

Website: PBCHW.COM

July 2022



Where the most
beautiful wild
flowers grow,
there man's spirit
is fed and poets
grow.

Henry David Thoreau



FROM THE BACK OF A HORSE ON THE TRAIL

PBCH CALENDAR

***All events subject to change;
Watch facebook and emails.***

***July 9- Mica Peak Member
Ride***

***July 9-10 ETS Ride at
Riverside***

***July 26- PBCH Meeting,
Potluck, and Boating***

***July 30 Advanced Natural
Horsemanship Clinic***

***August 9- PBCH Meeting,
Icecream Social and Play
Day***

***August 14- Antoine Peak
Member Ride***

***August 30- PBCH Board
Meeting***

President's Report

By Tom Birge

We have a new member Christine Rodko. Christine has already been active joining Ken and Patti at Escure on Memorial Day weekend.

Since we have a fun group activity on July 26th, we've decided to skip the regular July 12th meeting. Our July general meeting will be at the Lake. Ken and Patti are inviting all of us to the lake on July 26, see more information later in the newsletter.

I have a limited amount of 2023 BCHW calendars for \$10.00 each, they will be available at July meeting, first come, first served.

The Lakeview Ranch pump situation that we were going to help out on has been canceled due to the fact that the well is dry. We are proceeding with the numbering of the corrals at RSP equestrian campground and some related work. See more information in our Board Meeting Minutes that will be sent out via email.

Carol Klar has brought up some trail maintenance projects at RSP. If you're willing to help let Carol know. She will be sharing information soon.

We have some more educational opportunities coming up this fall so pay attention to your emails, newsletter and Facebook page.

Thank you for all who replied to the survey sent out via email on June 3rd. **It's still not too late to reply.** Basically what we would like to know is what types of rides/events that the membership would like to be involved in.

Thanks,

Tom

Lake Party in July

By Ken Carmichael

To change things up a bit PBCH will have a lake party. This is to show that we all have faith that the weather will improve.

On Tuesday, July 26 at 6:00 pm we will meet on Lake Spokane for a potluck and lake and lawn fun. Everyone can take their choice of boating, water skiing, kayaking, swimming, floating, several lawn games or just sitting in the shade visiting.

What should you bring? Your favorite potluck and swimsuit and towel for water activities. Everything else is there.

We will meet at my sister's home at 17820 N West Shore Rd.

Directions: From Highway 291 turn onto Charles Rd and cross over the Spokane River. Go approximately 4 miles to West Shore Road and turn right. As you approach West Shore Road there will be guard rails on both sides of the road and there is a fire station on that corner. Go down the hill on West Shore and along the waterfront until reaching the house. It is the next house after a vacant lot. Walk around the house to the lake side.

If you have questions or need further directions please call me at 509-466-2225. On the day of the event you may be able to reach me on my cell at 509-710-1162 but do not count on it.




Clipart-library.com

PONDEROSA BCH 2022 Planning Calendar (as of 6/29/22)

All dates subject to change due to COVID or other reasons.

[Consider printing this page to keep dates handy]

<p>This is an empty spot. </p>	<p>October October 4 - General Meeting; potluck; Elections, guest speaker October 15-16- ETS event at Spokane Sporthorse Farm October 25-PBCH Board Meeting October 28-29 - Zillah Wine Ride October Member Ride, time and location TBD</p>
<p>July July 9: Mica Peak Member Ride, led by Melissa Halpin and Patty Wright July 9-10, ETS event at Riverside Equestrian Area (See flyer at end of newsletter; contact Linda White) July 26- PBCH Meeting, Potluck, and Boating July 29-31- Ferry County chapter steak ride. July 30- Advanced Natural Horsemanship Clinic with the Zimmermans (see flyer at end of newsletter; contact Linda White)</p>	<p>November November 1- PBCH General Meeting; soup social, guest speaker November 29- PBCH Board Meeting</p>
<p>August August 9- PBCH Meeting, Icecream social and Play Day at Dee Dee's; nominating committee for officers will be selected, Discuss Preparedness. August 14- Antoine Peak Member Ride, led by Andrea and Rod Staton August 30- PBCH Board Meeting</p>	<p>December December 6 – PBCH General Meeting; Christmas Party</p>
<p>September September 6- PBCH General Meeting Sept. 24- Mt. Spokane Member Ride, led by Ken and Patti Carmichael September 27- PBCH Board Meeting</p>	<p>Other events can be found here: https://www.bchw.org/upcoming_events.php</p>

Mica Peak Conservation Area Member Ride July 9th

By Melissa Halpin

The drive to get there is mostly flat and easy, the ride is uphill and down.

Ride is approximately 2-3 hours. Bring a lunch or snacks.

Directions and ride time will be sent via email, and on the member's facebook page.

Fun Things Coming up ... From Carol Klar, VP and Edu Coordinator

Trailer Tips

At our recent board meeting, we discussed having a trailer safety program that would be presented in 3 parts. The tentative plan is to do Part 1 at the regular September meeting (9/6/22), with parts 2 and 3 the following Saturday (9/10/22) at Riverside State Park. Program contents would be as follows:

- 1) **On the road** – Our speaker will address: what the law requires of you. Speed Limits, Crossing State Lines and Port of Entry rules, Fines, Issues that have come about. Q&A. You will have some ah-ha moments with this one.
 - 2) **Trailer Mechanics** – Our speaker will discuss and evaluate trailers at the gathering for things like lights, flooring, chains, tire wear, tire pressure, battery, wheel bearings and other things that might need maintenance.
 - 3) **Trailer Rodeo** – We'll see how good your backing skills are, and might even offer some fun prizes!
- This is still in the development phase, so **please stay tuned for details** on this fun-informative event!

Riverside State Park – tree trimming work party

The river trail heading south of the equestrian park to TJ Meenach bridge is overgrown and could use some trimming. This is mostly small branches and brush, and hand-held pruners and loppers will be the tools used (not a chainsaw event). We'll be putting together a work party to work on this 2 mile stretch. Folks who are comfortable trimming brush from horseback may do so. Folks who would like a nice walk (on foot) along the trail can trim the lower bushes and move trimming debris off the trail! This is a lovely walk or ride! We plan to do this on a weekday; I'll be sending out details on the date and time, soon. Bye for now!



Greetings BCH Friends!

*During the August meeting at Deedee's, we'll have a round-table discussion on **Horse First Aid and Preparedness**. Below is a list of things I carry in my First-Aid box, just to use as a starting point. I'm sure you all have good things beyond this. Feel free to bring along your First Aid Box and/or ideas on the topic. Should be a fun time to exchange ideas! Thanks!*

Carol Klar – Ponderosa Education Coordinator

Horse First Aid Ideas

First Aid box for your trailer. Good for horse or human (easily transportable to another vehicle). Assemble this once and check periodically to restock items that are used or missing. Some items in this first-aid box can be taken in your saddlebags, when you ride. The type and duration of your ride will determine what you might need.

- Eye Wash (very handy, can be used for eyes or wound cleaning)
- Peroxide spray (wound cleaning)
- Antibiotic ointment
- Cotton balls (wound cleaning, applying medicines). [Interesting article...](#)
- Gauze 4x4s or prepackaged wound dressing
- Vet Wrap x2
- Clean towel (multipurpose item to control bleeding or work as cast padding)
- Multi tool
- Scissors
- Tweezers
- Two 8" long sections of garden hose to go in your horse's nose in the event of snakebite to the head
- Visible Vest (hunter orange or similar)
- Hand Wipes (clean hands, wipe out cuts)
- Water Bottle filled
- Sunscreen
- Human First Aid Kit (ibuprofen, antihistamine, sling, etc)
- Bottle of Benedryl - NOTE: it is **Extra-label** for horses, which means there isn't research to show how to use it or what the risks are. Use at your own risk. I've used this to treat major hives in a few of my horses over the years. [See notes here for details.](#)
- Medical info - Arm Band ID
- Duct tape, just cuz duct tape fixes most everything!
- Hand sanitizer
- Rubber gloves
- Pocket knife
- Personal locator beacon – can be used to summon help if phone isn't working
- Bute or Banamine (for the equine only)
- Headlamp
- Blanket or Space Blanket (if person is cold or shocky)
- Boot lace or rawhide lace

What you actually take out riding with you will be a subset of this with a few added items.

Director's Report

By Ken Carmichael

On Saturday, June 18, Doug Bailey and I attended the BCHW Board of Directors meeting in Ellensburg.

Committee chairs provided written reports and several topics were discussed in this full day meeting. The following are some of the highlights.

- **BCHW Executive Committee** – After over a year of proposals and discussion, the Board approved the creation of an Executive Committee. The goal is for the committee, which will meet monthly, to perform some of the board functions on a more timely basis. It will report back to the Board monthly. This required changes in the bylaws and standing rules. This is a work in progress but I think can improve BCHW operations.
- **Awards committee** – All chapters are encouraged to start thinking about BCHW awards. There are several awards presented at the state level at Rendezvous each year. Descriptions of the awards are on the BCHW website.
- **Leadership training** – Discussions are started as to the type of training, when and how training will take place probably in January. Are there topics that we want to have covered? Kim Merrick would also like to have an education contact at each chapter.
- **BCH of America** –
 - West Virginia has been added to the states with BCH chapters.
 - BCHA is closely monitoring situations where non equestrians are camping in equestrian campgrounds resulting in camps not being available to equestrians. BCHA created a form to document these occurrence so that corrections can be made.
 - For years BCH has supported, taught and practiced the Leave No Trace Program. Now we are developing a new program called Light on the Land. This is similar to LNT but is directed more at equestrians as opposed to being more general. This material is not out yet.
 - The 2023 BCHA board meeting will be in Kalispel Montana
- **Legislative** –
 - Mitzi Schindele is stepping down as chairperson because her job has shifted and she can no longer devote the time to Legislative issues. BCHW is looking for a new chair. If you are interested, please contact me.
 - E-Bikes – Washington Department of Fish and Wildlife and the Department of Natural Resources continue studies on where E-bikes should be allowed. BCHW has been involved in these discussions and continue to believe that E-bikes should be classified as a motorized vehicle and treated accordingly. As you see requests for input please respond. **The online survey remains open until July 15.** Please complete the survey at <https://www.surveymonkey.com/r/7RBC86B>. For more information visit wdfw.wa.gov/ebikes.
 - Keeping of Animals – These regulations will affect how we keep horses on our land and the maintenance and disposal of manure. BCHW participates in the discussions. As you see requests for input please respond.
 - Membership – As of June 4, 2022, BCHW has 1298 memberships with 2037 individual members. The Ponderosa chapter continues to grow. Thank you to everyone that supports our mission.
- **Leave No Trace (LNT)** – A Basic Skills class was held in Randal Washington. Patti and I attended this several years ago, and it is very good. BCHW is also looking for new leaders for this program. If you are interested, please contact me.
- **Publicity** – A reminder to share chapter activities with the BCHW Facebook for wider distribution. Reminder that all BCHW members have access to lots of information on the BCHW website. Some of the information is behind a username and password. Contact me if you have misplaced the security access.

- **Treasurer** – Linda Riley is now helping with chapter reports. Michele McGehee is reviewing contracts and agreements for BCHW. The Treasurer needs more help managing the fundraising platform and someone to make entries into Quick Books. If you are interested please contact me.
- **Rendezvous** – Plans are being made for the 2023 Rendezvous in March. The event is expanding into more space including the Pavilion. PBCH needs to determine how we will participate in 2023. Ideas are welcome.
- **BCHW calendars** – 2023 calendars are now available at the PBCH store. We have a limited number so act quickly. There are several beautiful pictures.
- **Winery ride** - 2021 ride broke records and plans are in effect for October 29 in Zillah WA. It is great fun to ride or volunteer. See the BCHW website.
- **Volunteer hours** – Report for the period October 1, 2021, through May 31, 2022 is in. Ponderosa did a great job. Carol Klar has more details.
- **Special Projects Coordinator** – We discussed the future of this position. We determined that it is important but needs to be more clearly defined. A more appropriate title would be “Trail Project Administrator” to perform some of the paperwork associated with the large work parties. If you are interested in such a position please contact me.
- **Trailhead News** – This BCHW publication continues to be a primary source of communication for BCHW. The January/February and the September/October issues are hard copy while the other four issues each year are electronic. We encourage everyone to read the THN.
- **BCHW sharing costs** – We discussed situations where BCHW would share costs of major projects with chapters. There are instances where some expenses are too large for one or two chapters and BCHW could contribute. This will receive more discussion.
- **Sawyer certification program** – This program continues to be very popular, and we are certifying sawyers for other organizations and the Forest Service. This creates additional costs that need to be covered. This money was approved and further analysis of the program will be done.
- **BCH expenses** – This is turning into a hot issue. Basically, what expenses are authorized under several regulations that BCH must follow as a nonprofit. As Chairman of the Governance and Bylaws Committee, I have worked closely with the BCHW Treasurer on past issues and drafted several papers on the subject. This will receive a thorough review.

As Chairman of the BCHW Governance and Bylaws Committee I have worked on several projects:

- **Chapter bylaws** – We drafted revised guidelines for chapter bylaws. These are on the BCHW website.
- **Chapter position descriptions** – We provided samples of job descriptions for many chapter volunteer opportunities. These are on the BCHW website.
- **BCHW officer and committee chair job descriptions** – We drafted job descriptions for the BCHW President, Vice President, Secretary, BCHA Directors and three committees. These are intended as models for job descriptions for all BCHW officers and committee chairs.

As always this is a very informative meeting with lots of good discussion. It is my pleasure to represent the Ponderosa Chapter.

June Meeting and Education Event

By Carol Klar

Our June Member Meeting was a fun event at [Riverside State Park Equestrian Area](#)! Asriel and Leah, from Knotty Girlz rope company provided an excellent presentation including innovations, safety, etc. There is so much more than just halters!

Note from Editor: *I was querying Asriel about the strength of their KG Rope Clip. I asked if it was up to the task of holding a Fjord Horse. Asriel gave me one to test. Here is my review:*

My fjord horse Vali has a kind heart, a touch of stubbornness, and the strength of a giant draft horse, even though he is just a bit over 14 hands. I was not convinced that the thin cord of the KG Rope Clip would stand up to his strength and fortitude. So I gave it the ultimate test: I tied him at a post, with grass in reach and a lot more grass out of reach. My fjord horse embraces the old saying: "You can call me anything but late for dinner". I left him tied for an hour, supervised of course. He nibbled what he could reach. He pulled. He reached. He pulled some more. Eventually he ate what he could, and finally stood nicely waiting for the next thing. The KG Rope Clip held up to the pulling of a hungry fjord. I proclaim the clip "built fjord tough". I highly recommend it. Plus, it comes in purple!

The product can be found here:

<https://www.knottygirlz.com/kg-rope-clip/>



BLM Lakeview Ranch

By Ken Carmichael

In the past there has been stock water at the Lakeview Ranch. Recently the electrical panel was damaged and PBCH agreed to participate in the cost of repair. In that process it was determined that the well is dry.

This leaves us without a source of water at Lakeview. We can haul water there or make trips into Odesa for water. This is disappointing but at this time cannot see an alternative.



Palisades Park Ride

By Ken Carmichael

On June 26, Patti and I rode with Craig Volosing and his wife Karen in the City of Spokane Palisades Park. This was a good opportunity for Craig to show us the area and how it relates to Riverside State Park.

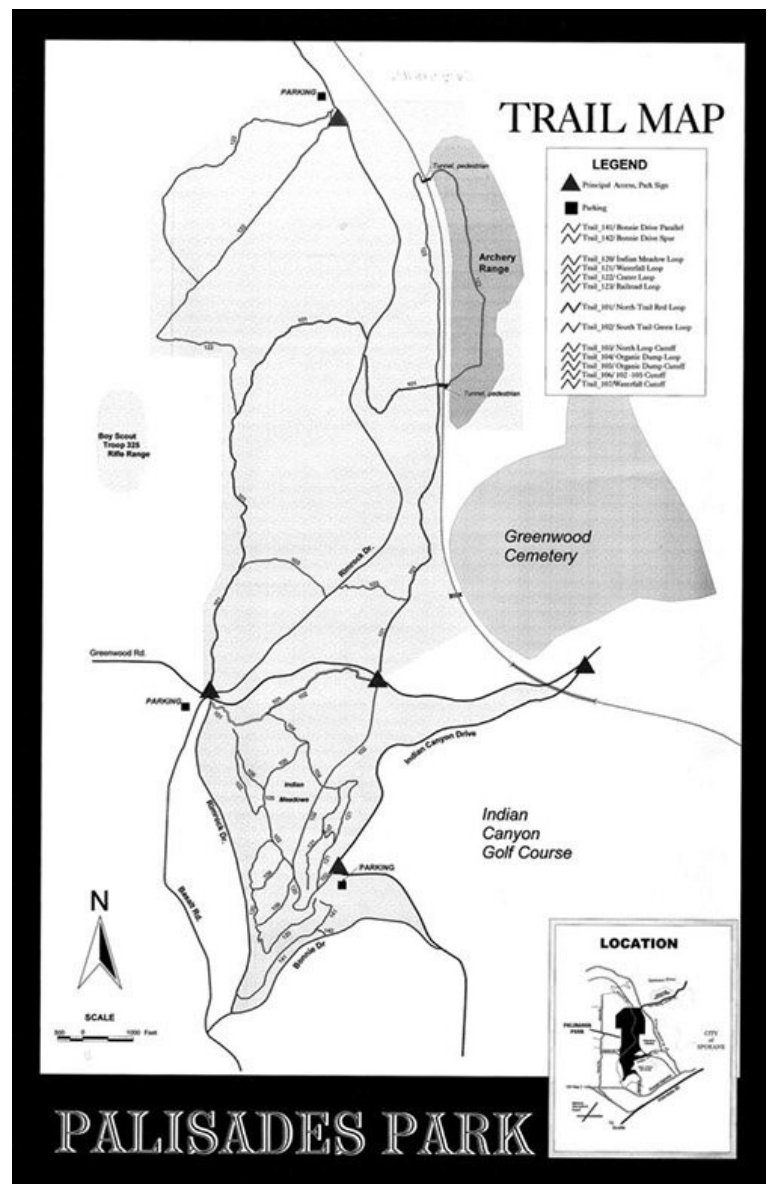
Palisades Park is an older city park that is being expanded through Conservation Future Funds and the willing sales by private owners. Palisades Park is south of Riverside State Park across Trails Road. Craig and the Friends of Palisades Park organization have been instrumental in making this addition possible. It will greatly expand the riding opportunities out of the Riverside State Park equestrian area.

We rode from Craig's property which adjoins the park to a place where we could see Trails Road. This is where it is hoped a land bridge for nonmotorized travel can be built to join these two great recreational areas. We also crossed the active railroad track where another bridge is anticipated.

Many trails need to be designed and built in the area and possibly a new trailhead. All of this will need the support of the community and equestrians. Ponderosa chapter has the opportunity to provide input and help in building trails.

Craig will keep us abreast of activities as they develop.

More info about Palisades Park can be found here:
<https://www.friendsofpalisades.com/>



Newsletter Theme: Rides and Bugs (including Viruses)

Strangles in Spokane

It is June 19th as I am writing this. The day is gray, cool, and rain is likely for the next few hours. Posts about Strangles seem to be all over Facebook. I hope by the time the newsletter article is published, that this is no longer a big issue in greater Spokane, but I'd like to summarize a few key points about the Strangles local outbreak, so people have solid facts, and can respond in a way that makes sense.

- 1) The local farm with strangles is under the care and watch of a good vet. Quarantine procedures are being followed and the State is tracking the case. Vets by law, need to report all cases of strangles to the state.
- 2) Strangles IS very contagious. It is messy to treat, but horses rarely die from it. Besides what is stated in the veterinary literature, I had firsthand experience dealing with this on my own farm about 35 years ago, back in Ohio. Yup, it plays out just as the articles below describe.
- 3) There IS a strangles vaccine, however, it has low (50%) efficacy and known side effects at an increased rate as compared to other equine vaccines.
- 4) Horses not previously vaccinated for strangles need a series of 2 or 3 (depending on delivery method), and will need several weeks to develop the (50%) immunity imparted from the vaccine.
- 5) The weather is a major factor. *Streptococcus equi*, the bacteria causing Strangles, does not persist well in the environment during hot/dry weather, so as we progress to summer-like conditions, Strangles should be significantly reduced, and will hopefully resolve.

For those of you who would like something beyond the "Reader's Digest version" above, please see the links from which I drew these conclusions.

- 1) [Vaccine Efficacy and other info from AAEP](#)
- 2) [About Strangles in general from Dr. Dave Ramey](#)
- 3) [How weather affects *Streptococcus Equi*, the bacteria causing Strangles](#)

Vaccines are certainly an option, but with all the caveats, might not be right for every horse. Chat with your vet about exposure risk and timing of vaccines. Given all the facts above, the best immediate defense would be to keep your horse home and away from other horses, at least until we are well into the Hot-Dry season. This kind of reminds me of our early Covid instructions, although Covid didn't take a break for hot weather.

Bye for now...

Carol Klar

Ponderosa BCH – Education Coordinator

Animals on the Trail

By Ken Carmichael

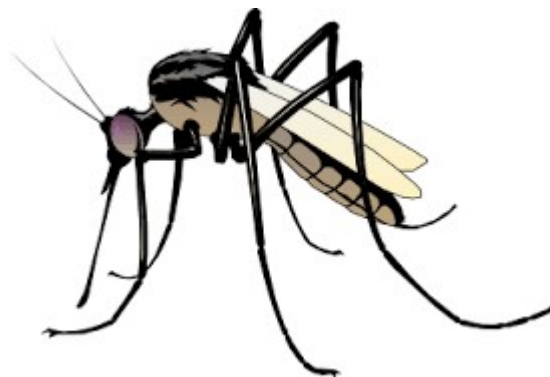
As nature will have it we can expect to meet wild animals on the trail. I heard a story once by a ranger that received a request from a camper. She asked if he could keep the birds from chirping so loud in the morning, it was waking her up.

Animals come in all sizes and shapes. Last week Riverside State Park Foundation sponsored an event in the park by the Fish and Wildlife Department about bears, cougars and moose. There are rules of the road that we should all be familiar with. You do not need to be in the back country to run into them. They can, and are, in Riverside State Park.

The other animals are those small annoying ones like mosquitos, snakes and ticks. We must take preventive action for these as well.

This all brings up the topics of survival and first aid. Do we know what to do when encountering animals, do we have the equipment and do we know how to use it? Please think about what you carry with you and what training you have received.

Last week I did a deep clean of our trailer including pulling floor mats and reviewing what I have in the trailer first aid box. This included reviewing some of the first aid guidelines. Good exercise.



Ancient Lakes

By Ken Carmichael

Patti and I recently spent a long weekend at Ancient Lakes southwest of Quincy, Washington. The ladies of PBCH camped there last year. It was 156 miles from our house and about a 3-hour drive. Some gravel road near the end but good roads.

There are two small campsites on public land but Patti and I stayed on private land owned by David Bishop. This is a great facility with a lawn, flush toilet, shower, water and about 7 very sturdy corrals. Dave invited us up to his house that is built on a rock outcropping overlooking the Columbia River. He said he can see seven miles downstream.

Access to the trails is excellent as is the view. We rode for three days. The first short day after arriving was up a box canyon to a series of small lakes. The second day was down to the Columbia River then some exploratory riding south along the river. The third day, prior to coming home, we went up another box canyon to a larger lake then did more exploratory riding.

This is high desert riding through sagebrush. The trails are particularly good but can be rocky. It is pretty easy to find your way around because of being able to keep track of the Columbia River.

We hated to come home and plan to go back.



Note from the editor: A special thanks to PBCH member Vern Hopkins as he continues to share a few of his western stories and tall tales with us. We will have a new story “The Houseguest” in the next Newsletter.

From the Editor:

I invite you all to continue to send me your stories, tips, jokes, articles, photos, words of wisdom, or whatever. I especially would like to encourage our officers and committee chairs to share their thoughts, visions and projects. The goal here is to make the newsletter fun, entertaining and informative.

Please send me photos of you and your equine buddy so I can highlight you in our newsletter. Introduce yourself to other members with background on you or your horse.

Photo by Carol Klar @ Bear Lake



Michelle Eames, Newsletter Editor

PBCH Officers

PRESIDENT

TOM BIRGE

VICE PRESIDENT

CAROL KLAR

SECRETARY

PATTY WRIGHT

TREASURER

DIANA BIRGE

STATE DIRECTOR

KEN CARMICHAEL

ALT. STATE DIRECTOR

LARRY GRINSTEAD

The Executive Board for PBCH includes the officers, plus Doug Bailey, Trail Boss; Michelle Eames, Newsletter; and Melissa Halpin, Spokane County Lands Coordinator.

EQUINETRAIL SPORTS

**Spokane River Stakes
Trail Challenge
Riverside State Park Equestrian Area
July 9-10, 2022, Spokane, WA**

What Makes ETS Different?

- Choose Your Challenge Level that best suits you and your horse at each obstacle!
- Enjoy new trails and make new friends at our family friendly events!
- Event registration is half price for all students!
- Membership is free to all students (7-22 years old)!
- No cost to register your equines!
- Obstacles are not timed!
- Events are open to all breeds of horses, donkeys and mules.
- Exciting tournaments for added fun!

Event Details

**Saturday, July 9, 2022
6 Mile Trail Challenge, 6 Obstacles**

**Sunday, July 10, 2022
6 Mile Trail Challenge, 6 Obstacles**

**Part of the Ustengo Triple
Crown Series**

Hosted By: Linda White
Linda43562@hotmail.com
(509) 413-7392

Riverside State Park Equestrian Area
Spokane, WA

Ride for Fun, Ride to Learn.

Trail Challenge. **Obstacle Course.** Recreation Ride.

WWW.EQUINETRAILSPORTS.COM





Advanced Natural Horsemanship Clinic

With Lorri Roy and Ethan Zimmerman

Foundation Horsemanship

From Victor, MT

Saturday, July 30, 2022

8 am to 4 pm

Take your riding to the next level!

This clinic is designed for students of natural horsemanship who want to increase their horsemanship skills. These exceptional clinicians have a vast array of knowledge and will give you results you can see and easily implement. Ethan and Lori have more than 20 years experience working with horses and were Parelli instructors for 6 years. They have both competed in and won many trail challenges, and specialize in trail and obstacle preparation, liberty, and competition.

Topics move beyond the basics and include getting in time with your horse's feet, improving upward and downward transitions, improving impulsion, using patterns, and more.

<https://foundationhorseman.wixsite.com/foundation>

Riverside State Park Equestrian Area

Spokane, WA

\$165, Limited to 10 participants

Register by contacting [Linda White](#),

Email: linda43562@hotmail.com

509-413-7392s

