

Big Commercial Outfitter Supported Work Party

July 26 – August 1, 2024



Overview

This will be the final work party of the season. Commercial outfitters will pack tools and gear into our camp at the junction of French Creek trail and Snowall Cradle trail. All work on this project will be along the French Creek trail to the junction with Meadow Creek trail. Trail crew members can have their gear packed up to the high camp or can ride outfitter stock or hike in to camp (approx 6.2 mi).

Previous Black Pine experience and leader approval is required.

About the area

The work will be centered out of the Black Pine Horse Camp, 19 miles west of Leavenworth, WA in the Okanogan-Wenatchee National Forest.

What to Expect

Gravel road leading to camp may be a bit rough but usually navigable for passenger cars. Prepare to camp in a Forest Service campground with limited services. Potable water source at camp is not dependable. Bring your own water supply. Pit toilets are available as well as garbage dumpster. You can camp in a tent, RV, or trailer for the first night. All other camps will be at French Creek Trail camp.

Trails are snow-free up to this level by this time. The weather is usually mild but chilly at night. Mountain weather can be unpredictable, however.

Project Description

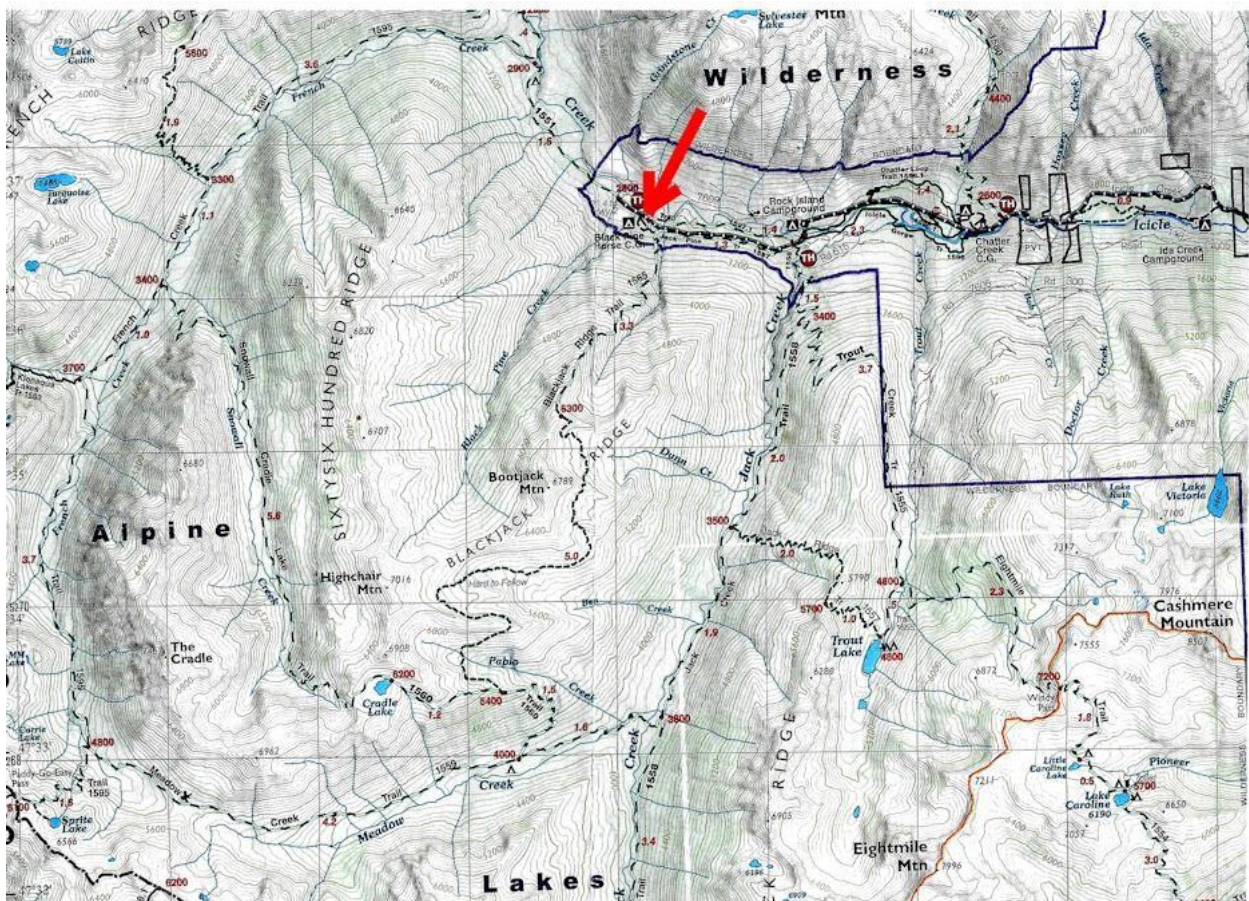
The objective of this project is to clear logs, and some tread repair, of trails along the French Creek trail #1595 from the base camp at junction of the Snowall Cradle trail #1560. We will be clearing the French Creek trail to the junction with the Meadow Creek Trail #1559 (approx. 4.7 mi.) We will be returning to the French Creek camp every night. If time allows, we may work on the Snowall Cradle trail as far as possible. All work will be within the wilderness boundary. Wilderness rules restricting power tools and heart-beat rules will be followed.

Driving directions

If you are driving to Leavenworth from the east side on US Hwy 2, there is a bypass to avoid downtown Leavenworth traffic. After the light at Safeway, just before the Wenatchee river bridge, you can turn left on E. Leavenworth Rd. This road will go to the Icicle Rd. Turn left.

If you are driving to Leavenworth from the west on US Hwy 2 (Stevens Pass), turn right on Icicle Rd. just before entering the town of Leavenworth.

Follow the Icicle road which shows as FS 7600 (or 76) on maps. The road is paved for about 13 miles and then turns to gravel. At about 15 miles, the road will turn left to cross a bridge over the Icicle Creek. This is now Icicle Forest Service Road 7600-915. Follow this road for a few miles and look for the sign to turn left at Black Pine Horse Camp.



Project Schedule

- Friday July 26 – Drive to Black Pine Horse Camp. Check in with project leader and report mileage. Set up camp and have dinner. Safety meeting will be at 6:30 p.m. Decide teams and work plan. Pack lunch for next day.

- Saturday July 27 – Breakfast at 5:30. After breakfast, we will drive from Black Pine Horse Camp to Icicle Creek trailhead to meet packer crews. Hikers can start any time from trail head. Some camp site preparation may be required. Packers and hikers set up camp at Snowall Cradle trail junction on French Creek trail. Trail work can start as soon as camp is set up. Return to camp for dinner no later than 6:00 pm.
- Sunday July 28 – Breakfast at 5:30. Teams start trail work after breakfast. Back to camp no later than 6:00 pm.
- Monday July 29 – Same schedule.
- Tuesday July 30 – Same schedule.
- Wednesday July 31 – After breakfast break down camp and load stock. Hikers can leave camp any time. All hikers and pack teams return to Black Pine base camp.
- Thursday Aug01 – Break camp and head home. Make sure you have reported your volunteer hours and mileage to project leader.

What it takes to do this work party

Forest Service certified and experienced sawyers. Although this will be our primary need for this event, we also need people willing to do swamping, brush clearing, drainage and tread repair. Tools used will be crosscut saws, bent shovels and/or pick mattocks. Familiarity with additional tools like straps, slings, jacks, pry bars will be helpful.

What to wear

Full PPE for all crosscut saw users. No Exceptions!

Boots, gloves, long-sleeved shirt, eye protection, hard hat.

Rain gear

Warm clothing - dress in layers, high mountain temperatures can vary considerably.

What to bring

Crosscut saw (recently sharpened), wedges, axe. Spare handles for saw are a worthwhile accessory.

Spring-summer mountain friendly camping gear; i.e. tent, sleeping bag, warm clothes, rain gear, first-aid kit, water and water filter/purification system, work gloves. Bug spray and sun protection should be included. Some tools will be provided, but feel free to bring your favorite tools.

We will need to use bent shovels, pick mattock, loppers, pruning tools, pry bars, nylon straps, etc.

Water is available at French Creek.

Backpackers to carry their own lunch, water and water filter/purification system, first-aid kit, any other supplies.

Plan on having enough food for your own needs unless group meals are announced.

Please contact Barb Talbot (253-312-3626 or btalbot1276@gmail.com) if you want to ride outfitter stock into camp.